

MONTANA 310

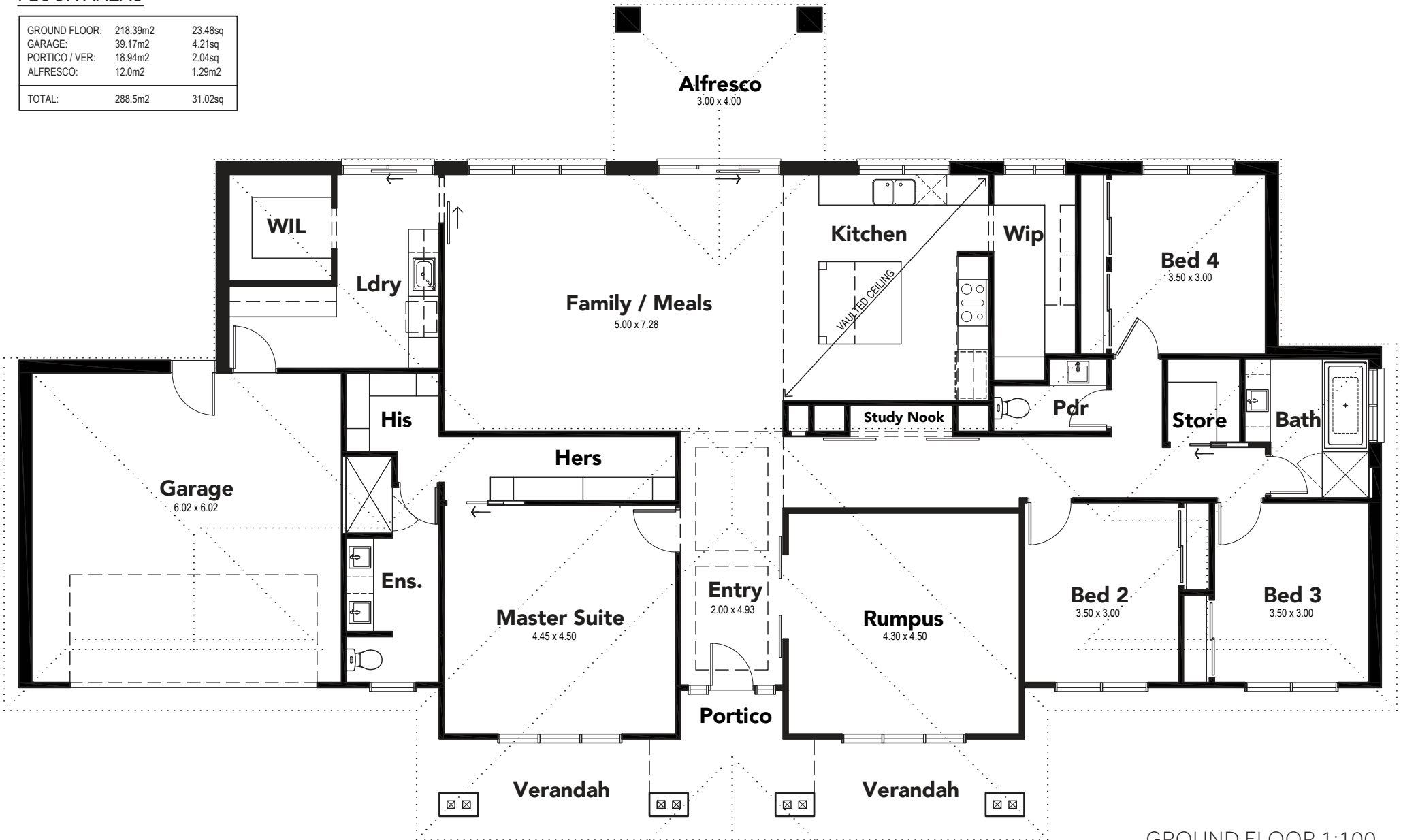
4 Bed & Alfresco



KIALLA HOMES

FLOOR AREAS

GROUND FLOOR:	218.39m ²	23.48sq
GARAGE:	39.17m ²	4.21sq
PORTICO / VER:	18.94m ²	2.04sq
ALFRESCO:	12.0m ²	1.29m ²
TOTAL:	288.5m ²	31.02sq



GROUND FLOOR 1:100
NOMINAL ROOM SIZES SHOWN