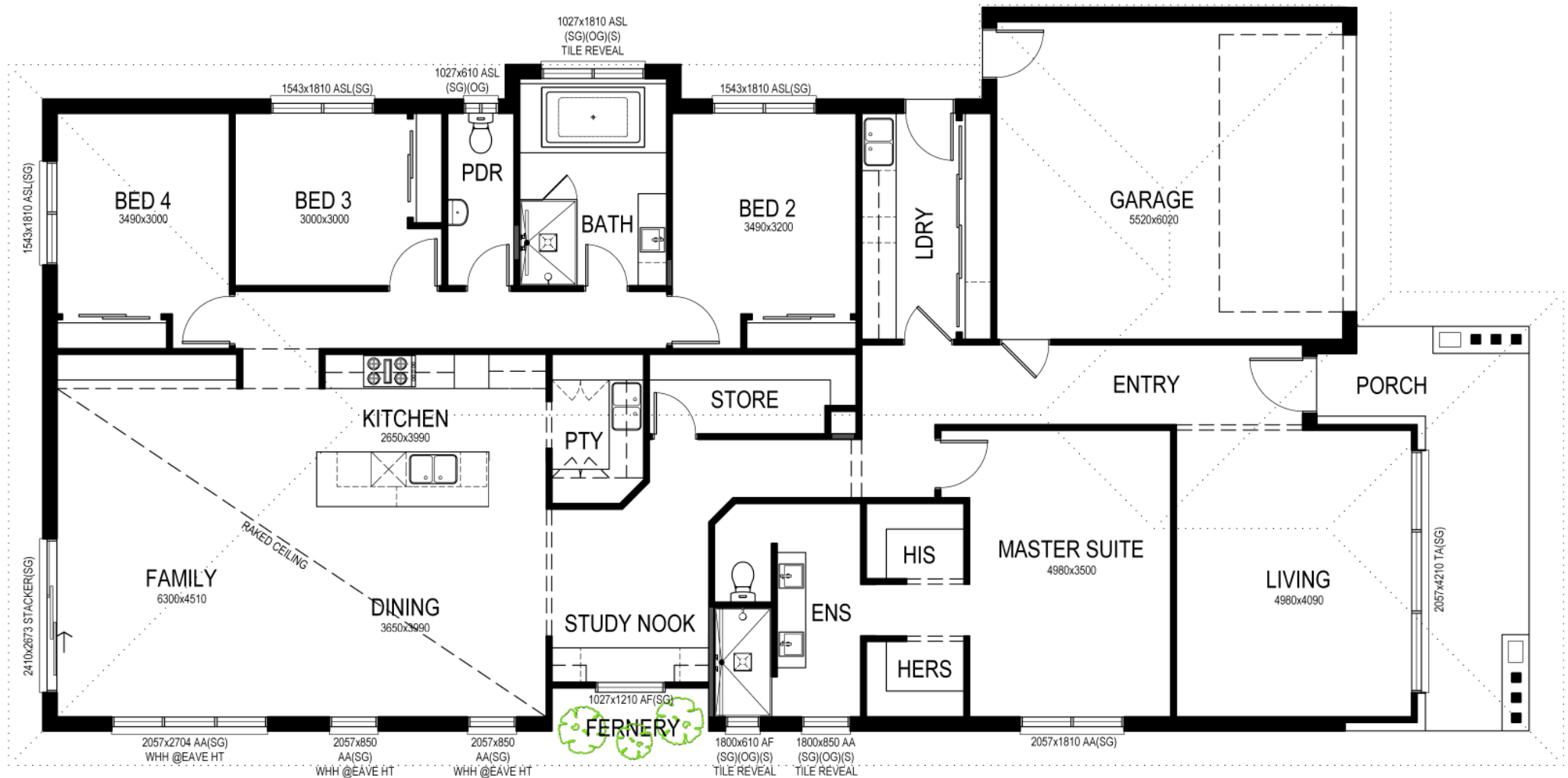


ARIZONA 302

4 Bed & Living



KIALLA HOMES



FLOOR AREAS

GROUND FLOOR:	228.32m2	24.55sq
GARAGE:	37.47m2	4.03sq
PORCH:	15.26m2	1.64sq
TOTAL:	281.05m2	30.22sq

© This drawing is subject to copyright, no part may be reproduced without the written permission of KIALLA HOMES.

GROUND FLOOR 1:100
NOMINAL ROOM SIZES SHOWN