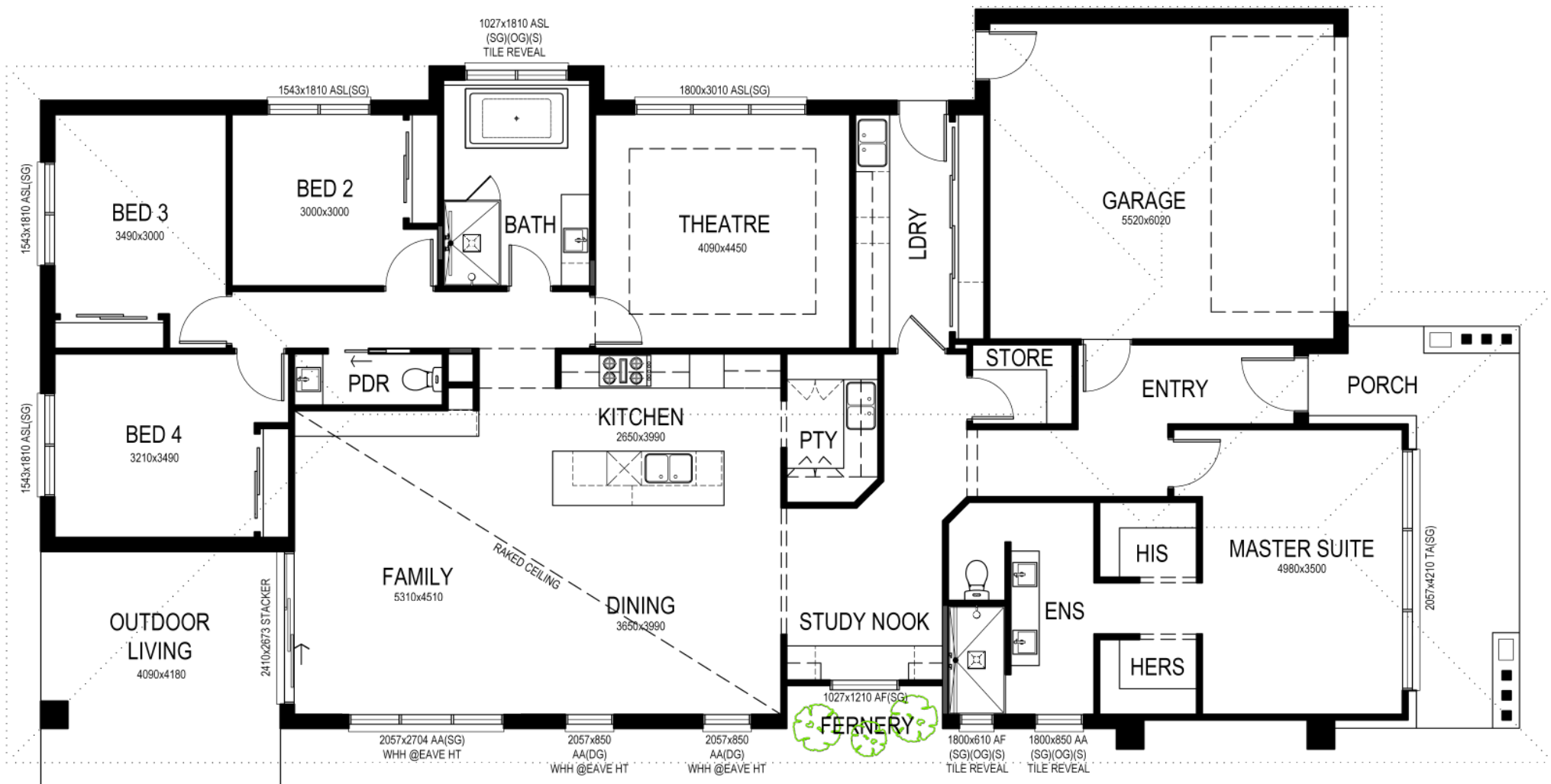


ARIZONA 306

4 Bed & Alfresco



KIALLA HOMES



FLOOR AREAS

GROUND FLOOR:	215.31m2	23.15sq
GARAGE:	37.47m2	4.03sq
PORCH:	15.26m2	1.64sq
OUTDOOR LIVING:	17.09m2	1.84sq
TOTAL:	285.13m2	30.66sq

© This drawing is subject to copyright, no part may be reproduced without the written permission of KIALLA HOMES.

GROUND FLOOR 1:100
NOMINAL ROOM SIZES SHOWN