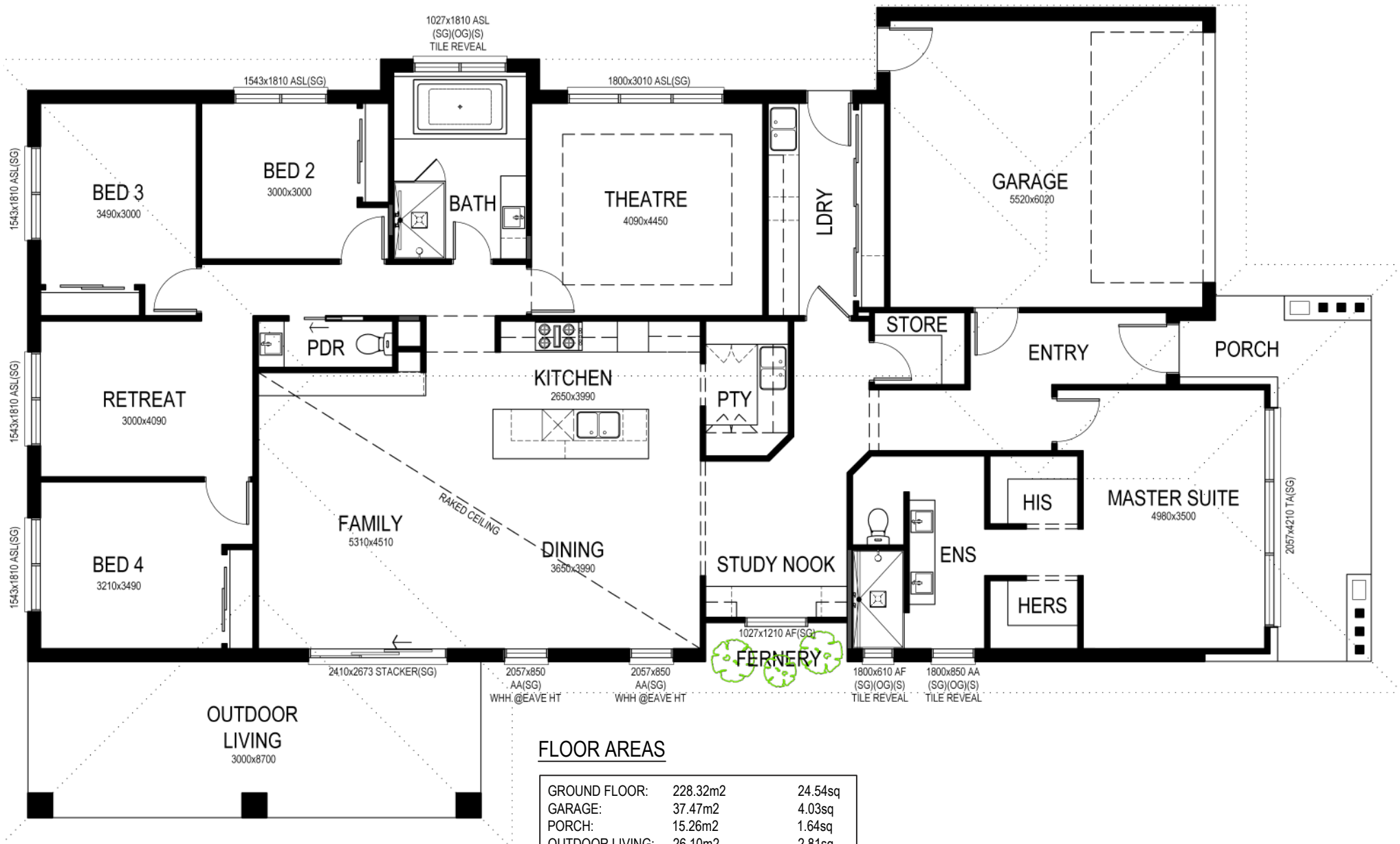


ARIZONA 330

4 Bed & Retreat



KIALLA HOMES



FLOOR AREAS

GROUND FLOOR:	228.32m2	24.54sq
GARAGE:	37.47m2	4.03sq
PORCH:	15.26m2	1.64sq
OUTDOOR LIVING:	26.10m2	2.81sq
TOTAL:	307.15m2	33.03sq

© This drawing is subject to copyright, no part may be reproduced without the written permission of KIALLA HOMES.

GROUND FLOOR 1:100
NOMINAL ROOM SIZES SHOWN