

# MONTANA 290

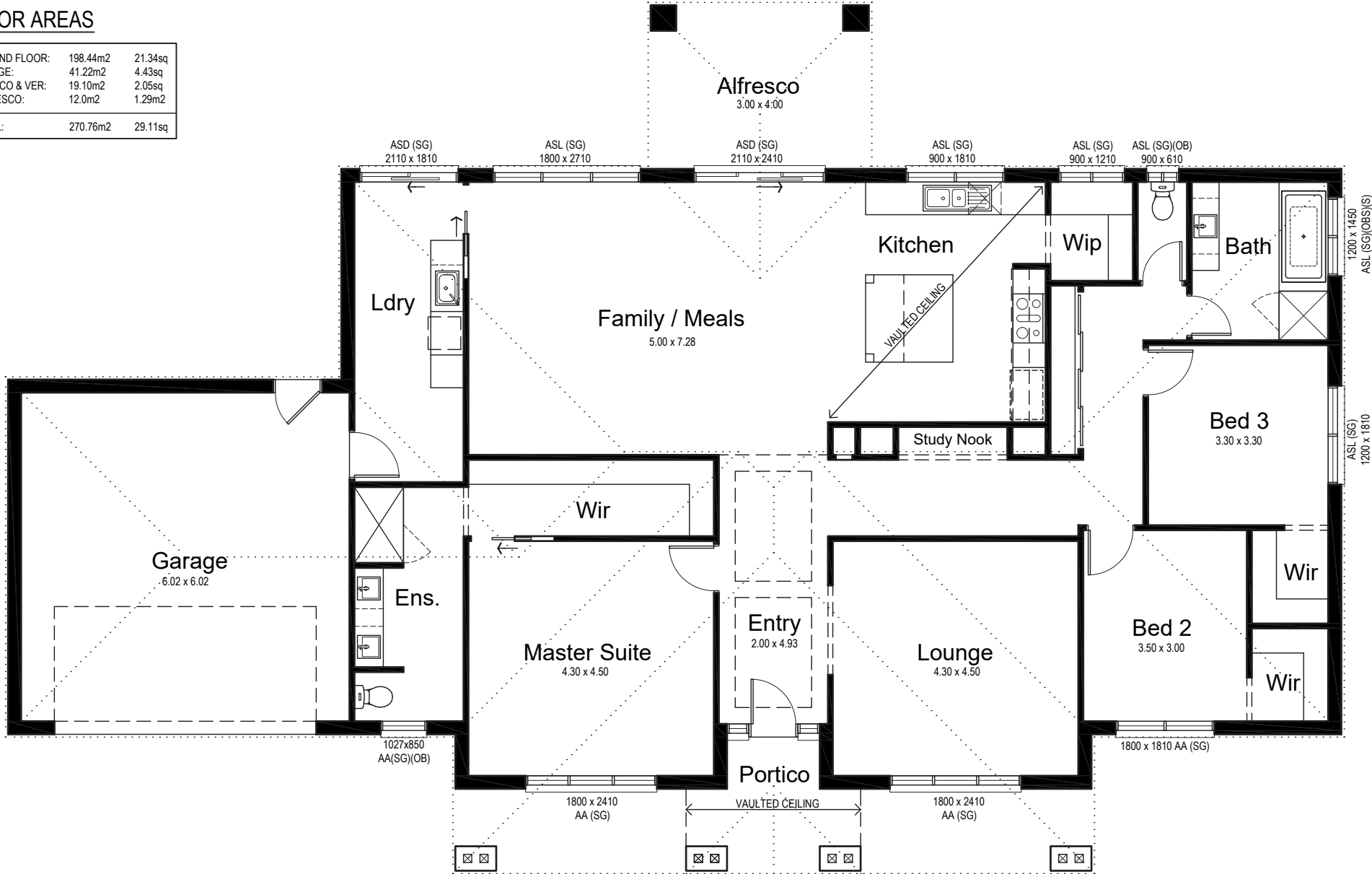
3 Bed & Outdoor Living



KIALLA HOMES

### FLOOR AREAS

GROUND FLOOR:	198.44m <sup>2</sup>	21.34sq
GARAGE:	41.22m <sup>2</sup>	4.43sq
PORTICO & VER:	19.10m <sup>2</sup>	2.05sq
ALFRESCO:	12.0m <sup>2</sup>	1.29m <sup>2</sup>
TOTAL:	270.76m <sup>2</sup>	29.11sq



GROUND FLOOR 1:100  
NOMINAL ROOM SIZES SHOWN

© This drawing is subject to copyright, no part may be reproduced without the written permission of KIALLA HOMES.