

# MONTANA 310

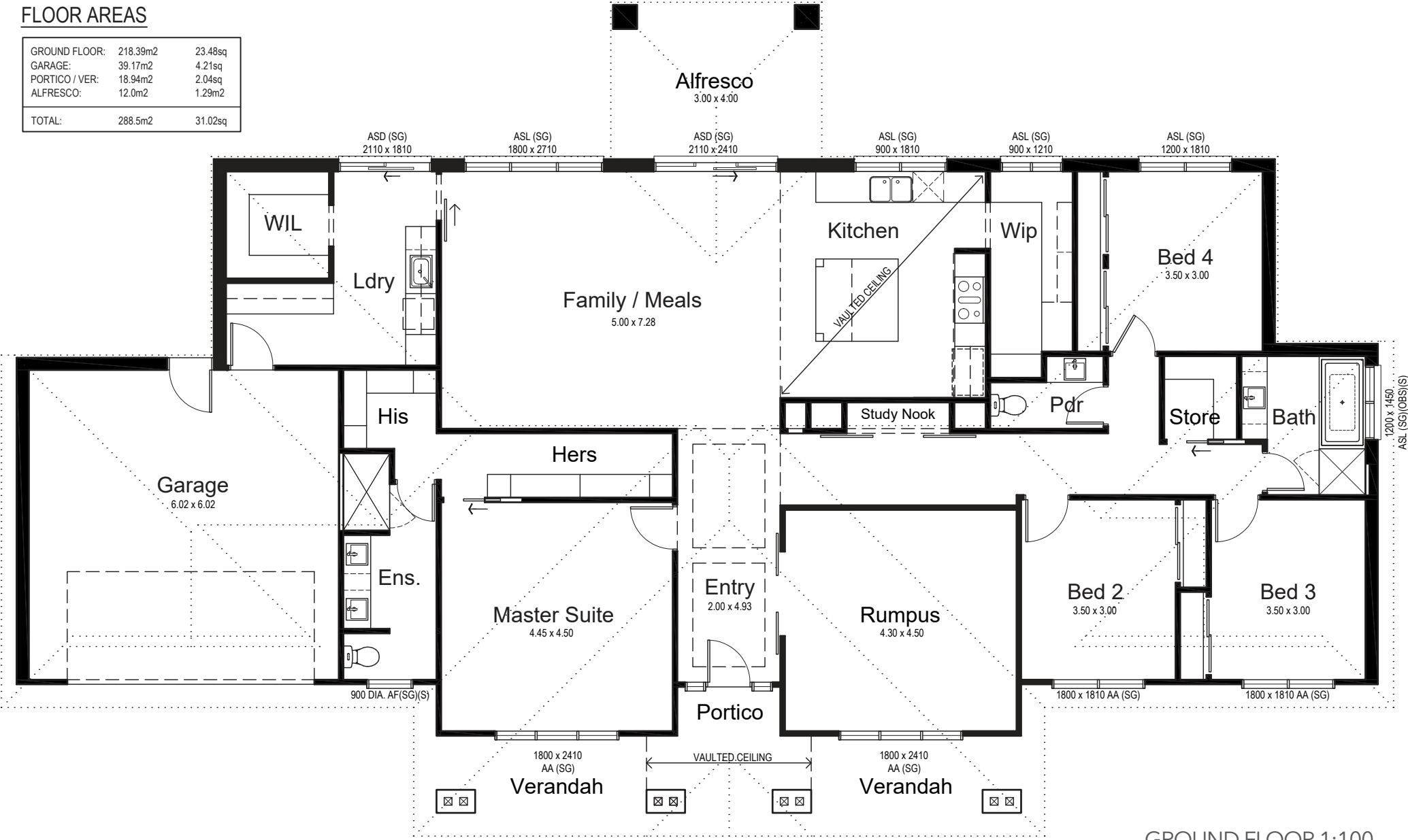
4 Bed & Outdoor Living



KIALLA HOMES

### FLOOR AREAS

GROUND FLOOR:	218.39m <sup>2</sup>	23.48sq
GARAGE:	39.17m <sup>2</sup>	4.21sq
PORTICO / VER:	18.94m <sup>2</sup>	2.04sq
ALFRESCO:	12.0m <sup>2</sup>	1.29m <sup>2</sup>
TOTAL:	288.5m <sup>2</sup>	31.02sq



© This drawing is subject to copyright, no part may be reproduced without the written permission of KIALLA HOMES.

GROUND FLOOR 1:100  
NOMINAL ROOM SIZES SHOWN