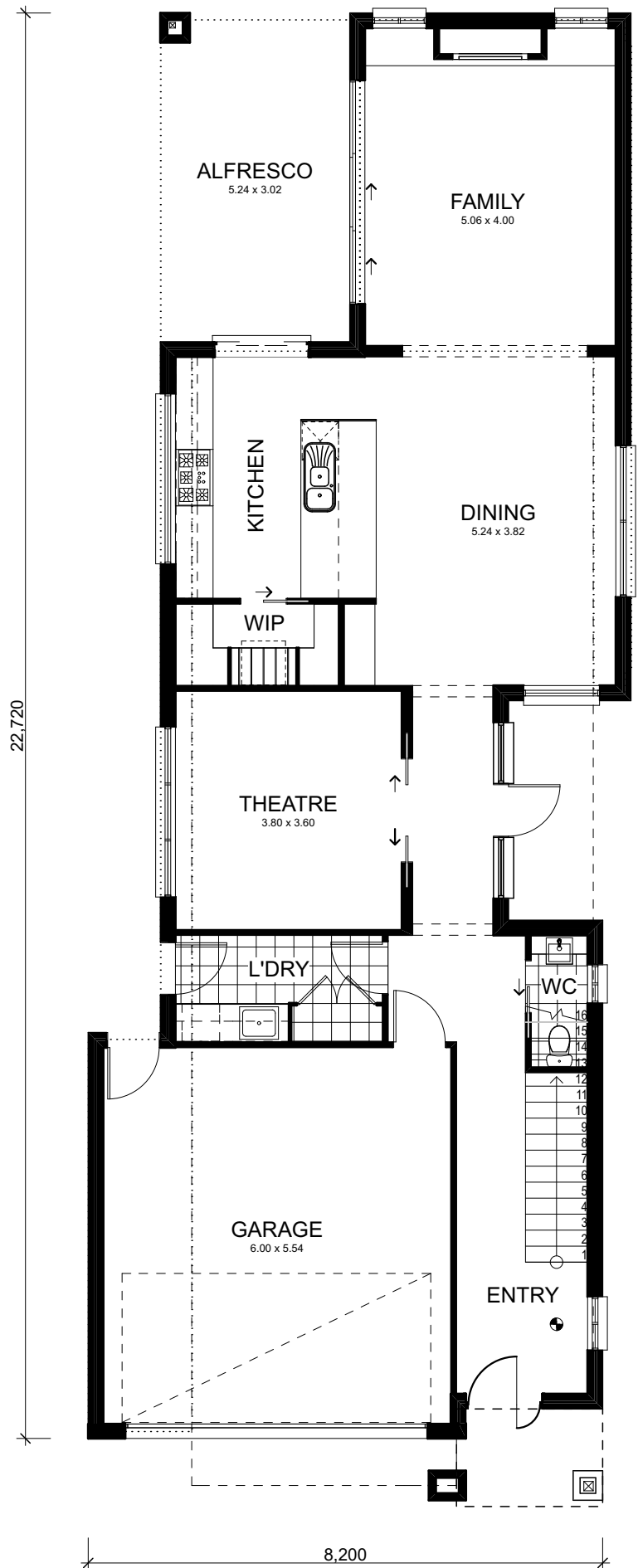


# BEAUMARIS 303

4 Bed & Outdoor Living



KIALLA HOMES



## FLOOR AREAS

GROUND FLOOR:	112.95m <sup>2</sup>	12.16sq
FIRST FLOOR:	111.58m <sup>2</sup>	12.01sq
GARAGE:	37.53m <sup>2</sup>	4.04sq
OUTDOOR LIVING:	15.82m <sup>2</sup>	1.70sq
PORTICO/VERANDA:	3.75m <sup>2</sup>	0.40sq
<b>TOTAL:</b>	<b>281.64m<sup>2</sup></b>	<b>30.31sq</b>

GROUND FLOOR 1:100  
NOMINAL ROOM SIZES SHOWN

© This drawing is subject to copyright,  
no part may be reproduced without the written  
permission of KIALLA HOMES.

# BEAUMARIS 303

4 Bed & Outdoor Living



KIALLA HOMES

## FLOOR AREAS

GROUND FLOOR:	112.95m <sup>2</sup>	12.16sq
FIRST FLOOR:	111.58m <sup>2</sup>	12.01sq
GARAGE:	37.53m <sup>2</sup>	4.04sq
OUTDOOR LIVING:	15.82m <sup>2</sup>	1.70sq
PORTICO/VERANDA:	3.75m <sup>2</sup>	0.40sq
<b>TOTAL:</b>	<b>281.64m<sup>2</sup></b>	<b>30.31sq</b>

FIRST FLOOR 1:100  
NOMINAL ROOM SIZES SHOWN

© This drawing is subject to copyright,  
no part may be reproduced without the written  
permission of KIALLA HOMES.

